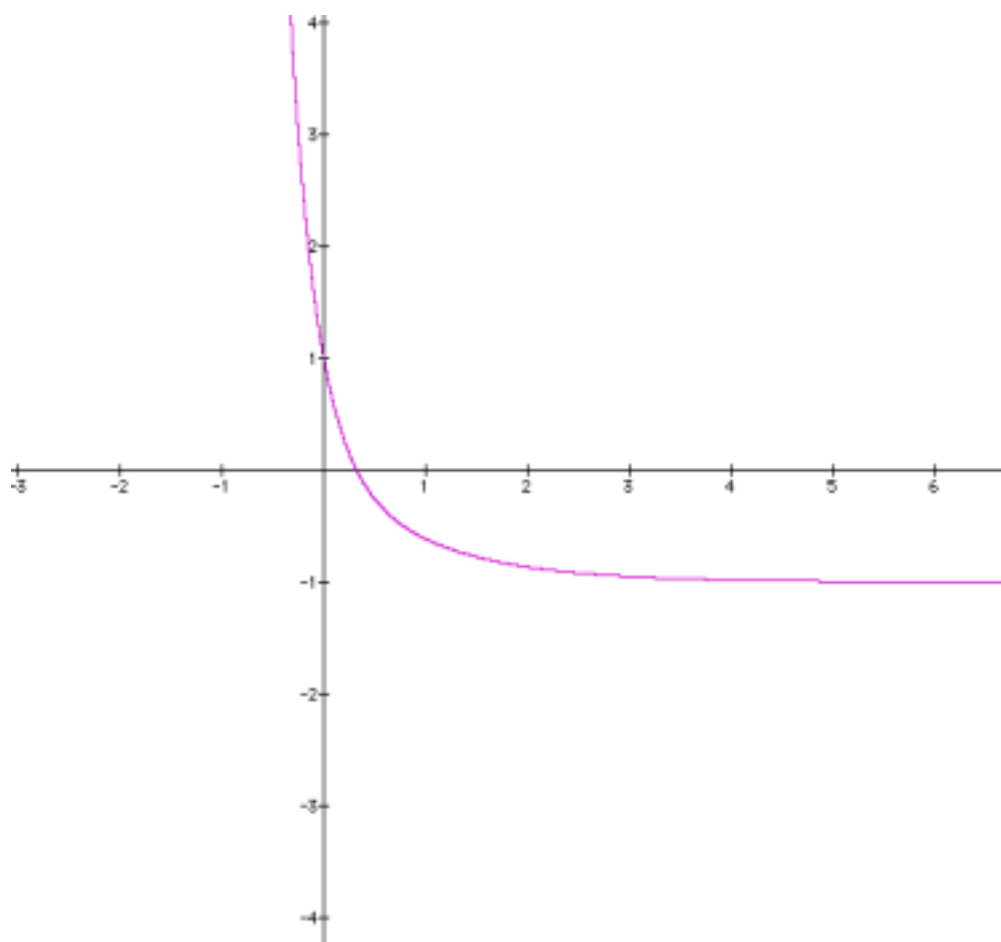


METODO DI BISEZIONE per l'equazione $e^{(-4x)}+e^{(-x)}-1=0$

tolleranza= .001

k	a(k)	b(k)	{a(k)+b(k)}/2	f(m)
1	0	1	0.5	-0.258
2	0	0.5	0.25	0.147
3	0.25	0.5	0.375	-0.0896
4	0.25	0.375	0.312	0.0181
5	0.312	0.375	0.344	-0.0381
6	0.312	0.344	0.328	-0.0106
7	0.312	0.328	0.32	0.00361
8	0.32	0.328	0.324	-0.00352
9	0.32	0.324	0.322	3.47e-05
10	0.322	0.324	0.323	-0.00175



METODO DI BISEZIONE per l'equazione $(x)^7+x-1=0$

»a1= 0 b1= 1 tolleranza= .001

k	a(k)	b(k)	{a(k)+b(k)}/2	f(m)
1	0	1	0.5	-0.492
2	0.5	1	0.75	-0.117
3	0.75	1	0.875	0.268
4	0.75	0.875	0.812	0.0463
5	0.75	0.812	0.781	-0.0411
6	0.781	0.812	0.797	0.000923
7	0.781	0.797	0.789	-0.0205
8	0.789	0.797	0.793	-0.00988
9	0.793	0.797	0.795	-0.00451
10	0.795	0.797	0.796	-0.0018

