

CLEVER!

A round watermelon can take up a lot of room in a refrigerator and the usually round fruit often sits awkwardly on refrigerator shelves.

Smart Japanese Farmers have forced their watermelons to grow into a square shape by inserting the melons into square, tempered glass cases while the fruit is still growing on the vine.





And take a look at this!? Made in Japan!



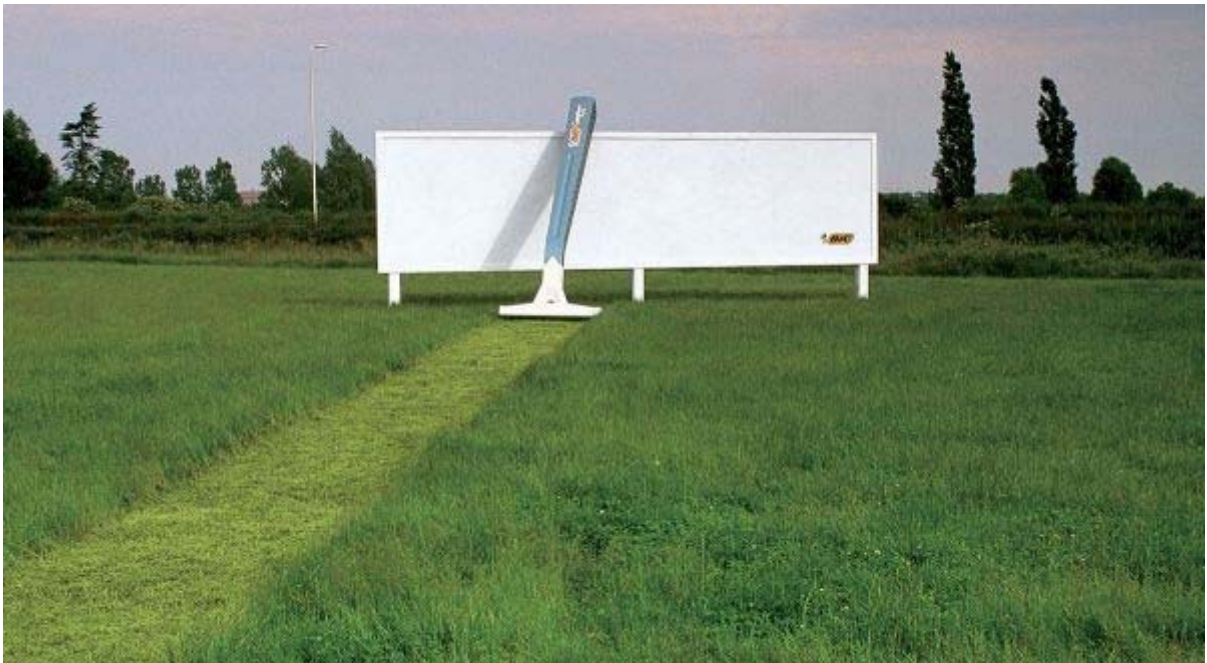






CLEVER ADVERTISING

WHO THINKS OF THESE THINGS?



















YOU



have a GREAT Day!!!